

1995 Boys' Sweet Sixteen Action

first round

MARSHALL COUNTY

VS.

SIMON KENTON

March 15, 1995

**Rupp Arena
Lexington, Kentucky**

OFFICIAL STATISTICS BOOKLET

OFFICIAL NFSHA BASKETBALL BOX SCORE: *** FINAL ***
 Date: 03-15-95 Site: BOY'S SWEET 16, LEXINGTON

VISITORS (Last Name, First)

NO.	NAME	Tot FG		3-POINT		FT	FTA	Rebounds			PF	TP	A	TO	BLK	S	TIME
		FG	FGA	FG	FGA			OFF	DEF	TOT							
	SIMON KENTON	6	12	0	1	3	4	4	2	6	4	15	1	2	0	0	32:22
24	DENNIS, BILL	3	12	1	4	1	2	0	6	6	4	8	5	2	1	2	35:50
25	MCKINLEY, JEFF	4	6	0	0	0	2	4	3	7	5	8	0	0	1	0	22:41
33	MEYER, SCOTT	4	9	2	5	11	13	0	3	3	5	21	3	4	0	1	33:09
15	KROHMAN, JEFF	5	10	1	4	4	4	1	1	2	4	15	1	3	0	1	28:38
21	BROSKY, NICK	0	0	0	0	0	0	0	0	0	1	0	2	1	0	0	5:03
30	ARROWOOD, CHRIS	0	1	0	1	1	2	1	0	1	1	1	0	1	0	0	13:25
10	KRAEMER, JASON	0	1	0	0	0	0	0	0	0	0	0	0	0	0	0	8:07
44	CLARK, STEVE	0	1	0	0	0	0	0	2	2	0	0	0	0	0	0	0:19
23	HAYWOOD, MITCH.	1	1	0	0	0	0	0	0	0	1	0	0	0	0	0	0:10
20	DARRELL, DANNY	0	0	0	0	0	0	0	0	0	0	0	0	0	0	0	0:8
13	GASKINS, BRIAN	0	0	0	0	0	0	0	0	0	0	0	0	0	0	0	0:8
14	HARVEY, BRIAN	0	0	0	0	0	0	0	0	0	0	0	0	0	0	0	0:8
TEAM REBOUNDS (INCLUDED IN TOTALS)								1	1	2							
TOTALS		23	52	4	15	20	27	11	18	29	25	70	13	13	2	4	180

Percentages: Game - FG 23/52 44.2% 3-PT. 4/15 26.7% FT 20/27 74.1%

Period 1	6/9	66.7%	2/4	50.0%	4/4	100.0%
Period 2	6/12	50.0%	1/3	33.3%	1/2	50.0%
Period 3	3/12	25.0%	0/1	0.0%	8/10	80.0%
Period 4	6/12	50.0%	0/2	0.0%	6/9	66.7%
Period 5	2/7	28.6%	1/5	20.0%	1/2	50.0%

HOME (Last Name, First)

NO.	NAME	Tot FG		3-POINT		FT	FTA	Rebounds			PF	TP	A	TO	BLK	S	TIME
		FG	FGA	FG	FGA			OFF	DEF	TOT							
	MARSHALL COUNTY	13	19	4	5	13	14	4	6	10	4	43	0	5	1	0	35:52
42	LANGHI, DAN	1	6	0	1	4	4	0	5	5	3	6	0	2	1	1	35:31
00	SANDERS, ROBERT	2	3	0	0	1	2	3	1	4	4	5	0	0	1	0	31:44
12	BREWER, RORY	1	7	0	3	1	1	3	1	4	5	3	2	1	0	1	28:56
33	STORY, JEREMY	8	14	1	3	2	6	1	3	4	2	19	7	6	1	1	35:52
35	MORTON, KEITH	0	0	0	0	0	0	0	0	0	2	0	1	0	0	0	10:09
31	FRALEY, CHARLIE	0	0	0	0	0	0	0	1	1	1	0	0	1	0	0	1:24
10	HENSON, CHAD	0	0	0	0	0	0	0	0	0	0	0	0	0	0	0	0:8
25	LEEPER, KYLE	0	0	0	0	0	0	0	0	0	0	0	0	0	0	0	0:8
22	BURKEEN, BRIAN	0	0	0	0	0	0	0	0	0	0	0	0	0	0	0	0:8
24	HALL, DUSTIN	0	0	0	0	0	0	0	0	0	0	0	0	0	0	0	0:8
TEAM REBOUNDS (INCLUDED IN TOTALS)								5	5	10							
TOTALS		25	49	5	12	21	27	11	22	33	21	76	10	15	4	3	180

Percentages: Game - FG 25/49 51.0% 3-PT. 5/12 41.7% FT 21/27 77.8%

Period 1	5/11	45.5%	1/2	50.0%	2/3	66.7%
Period 2	6/9	66.7%	1/3	33.3%	1/2	50.0%
Period 3	4/11	36.4%	2/4	50.0%	4/5	80.0%
Period 4	8/16	50.0%	1/3	33.3%	6/8	75.0%
Period 5	2/2	100.0%	0/0	0.0%	8/9	88.9%

OFFICIALS: Sarge Donahue, Rick Chasteen, Glenn Brown-Alt
 Technicals: None

SCORE BY PERIODS
 SIMON KENTON 18 14 14 18 6 = 70
 MARSHALL COUNTY 13 14 14 23 12 = 76

Attendance: 15,175
 COMMENTS: POINTS OFF TURNOVERS 19 MARSHALL COUNTY
 SIMON KENTON 15 MARSHALL COUNTY 10 MARSHALL COUNTY 17
 Produced by the KHSAA SWEET 16 Stat Crew with FINAL III - a Product of Stone Consulting (606)273-3941

SIMON KENTON "PIONEERS" vs MARSHALL COUNTY "MARSHALS"
1st Half Play by Play

PAGE : 1

Tip off at 9:00 P.M. on 03/15/95 at BOY'S SWEET 16, LEXINGTON
Produced by the KHSAA SWEET 16 Stat Crew with FINAL III
Final III is a product of STONE CONSULTING SERVICE (606)273-3941

MARSHALL COUNTY				SIMON KENTON			
Player	Team			Time	Score	Player	Team
LANGHI, DAN, CLEVIDENCE, TODD, SANDERS, ROBERT, BREWER, RORY, STORY, JEREMY Ball to MARSHALS				DENNIS, BILL, MCKINLEY, JEFF, MEYER, SCOTT, KROHMAN, JEFF, BROSKY, NICK			
1-2	50.0%	1-2	50.0%	1 7:31	0-2*	Driving Layup by DENNIS, BILL Assist by MCKINLEY, JEFF	1-1 100% 1-1 100%
1		1		1 6:48	0-4*	17 ft Right Side Jump shot by MCKINLEY, JEFF	1-1 100% 2-2 100%
1		1		1 6:16	*2-4		
1-2	50.0%	1-2	50.0%	1 6:09			
1		1		1 6:09	2-6*	KROHMAN, JEFF, 2 Free Throws made both Foul on MEYER, SCOTT	2-2 100% 2-2 100%
1		1		1 5:54			
1		2		1 4:50			
				1 4:50	2-8*	BROSKY, NICK, 2 Free Throws made both	2-2 100% 4-4 100%
				1 4:17	2-10*	Follow Tip by BROSKY, NICK	1-1 100% 3-5 60.0%
				1 4:17			
REB: 1 A: 1 BLK: 0 TO: 2 PF: 2 S: 0 FT: 0-0 00.0% FG: 1-5 20.0%				REB: 5 A: 1 BLK: 0 TO: 1 PF: 1 S: 0 FT: 4-4 100% FG: 3-5 60.0%			
No. 1 MARSHALL COUNTY				T I M E - O U T			
1-2	50.0%	1-2	50.0%	1 3:51	2-13*	3 pt 21 ft Left Side Jump shot by BROSKY, NICK Assist by MCKINLEY, JEFF	2-2 100% 4-6 66.6%
2-4	50.0%	2-7	28.5%	1 3:25	2-15*	Layup Off Fast Break by MEYER, SCOTT Assist by MCKINLEY, JEFF	1-1 100% 5-7 71.4%
				1 3:08		Foul on MCKINLEY, JEFF	3 3
				1 3:08		Sub In: ARROWOOD, CHRIS Out: MEYER, SCOTT	1 2
1-2	50.0%	1-2	50.0%	1 3:08	*3-15		
2-4	50.0%	2-7	28.5%	1 3:06	*5-15		
				1 2:40	5-18*	3 pt 22 ft Right Side Jump shot by KROHMAN, JEFF Assist by ARROWOOD, CHRIS	1-2 50.0% 6-8 75.0%
3-5	60.0%	3-8	37.5%	1 2:18	*7-18		
				1 2:18		Foul on DENNIS, BILL	1 3
				1 2:18		Sub In: KRAEMER, JASON Out: DENNIS, BILL	
1-1	100%	2-3	66.6%	1 2:18	*8-18		
1-1	100%	4-9	44.4%	1 1:32	*11-18		
4-6	66.6%	5-11	45.4%	1 1:07	*13-18		

4 ft Lane Driving by LANGHI, DAN
Assist by STORY, JEREMY
Foul on CLEVIDENCE, TODD

Foul on BREWER, RORY

SANDERS, ROBERT, 2 Free Throws made 1st missed 2nd
4 ft Lane Follow by LANGHI, DAN

4 ft Lane Turnaround by LANGHI, DAN

LANGHI, DAN, 1 Free Throw made
3 pt 20 ft Left Angle Jump shot by STORY, JEREMY
Assist by BREWER, RORY
Follow Layup by LANGHI, DAN

SIMON KENTON "PIONEERS" vs MARSHALL COUNTY "MARSHALS"
1st Half Play by Play

PAGE : 2

Tip off at 9:00 P.M. on 03/15/95 at BOY'S SWEET 16, LEXINGTON
Produced by the KHSAA SWEET 16 Stat Crew with FINAL III
Final III is a product of STONE CONSULTING SERVICE (606)273-3941

Player	Team	MARSHALL COUNTY	Time	Score	SIMON KENTON	Player	Team
LANGHI, DAN, CLEVIDENCE, TODD, SANDERS, ROBERT, BREWER, RORY, STORY, JEREMY			KRAEMER, JASON, KROHMAN, JEFF, DENNIS, BILL, MCKINLEY, JEFF, MEYER, SCOTT Ball to PIONEERS				
2-2	100%	6-12 50.0%	13 ft Right Side Jump shot by STORY, JEREMY	2 7:28 *15-18			
				2 7:07	Foul on MEYER, SCOTT	2	4
				2 7:07			
		REB: 6 A: 2 BLK: 0 TO: 4 PF: 2 S: 1 FT: 2-3 66.6% FG: 6-12 50.0%		TIME - 0	UT SIMON KENTON No. 1	REB: 6 A: 4 BLK: 0 TO: 4 PF: 4 S: 0 FT: 4-4 100% FG: 6-11 54.5%	
5-7	71.4%	7-13 53.8%	Alley Oop Layup by LANGHI, DAN Assist by STORY, JEREMY	2 6:50 *17-18			
2		3		2 6:27	Sub In: ARROWOOD, CHRIS Out: MEYER, SCOTT		
				2 6:27	Sub In: BROSKY, NICK Out: KRAEMER, JASON		
				2 6:27	17-20* 8 ft Lane Jump shot by BROSKY, NICK Assist by ARROWOOD, CHRIS	3-3	100% 7-13 53.8%
				2 5:53	17-22* Layup Off Fast Break by KROHMAN, JEFF	2-3	66.6% 8-14 57.1%
				2 5:33	*19-22		
6-8	75.0%	8-14 57.1%	Alley Oop Layup by LANGHI, DAN Assist by STORY, JEREMY	2 5:33	Foul on ARROWOOD, CHRIS	1	5
3		4		2 5:33	*20-22		
2-2	100%	3-4 75.0%	LANGHI, DAN, 1 Free Throw made	2 5:33	Sub In: CLARK, STEVE Out: ARROWOOD, CHRIS	2-3	66.6% 9-15 60.0%
				2 5:33	20-24* Driving Layup by DENNIS, BILL Assist by MCKINLEY, JEFF	4	6
				2 4:49	Player Control Foul on KROHMAN, JEFF	1	6
				2 4:43	Foul on BROSKY, NICK	1	7
				2 4:43			
0-1	00.0%	3-5 60.0%	STORY, JEREMY, 1 & Bonus missed 1st	2 4:36	20-26* 12 ft Left Side Jump shot by BROSKY, NICK Assist by DENNIS, BILL	4-4	100% 10-16 62.5%
1		3	Foul on SANDERS, ROBERT	2 4:20		1	7
				2 4:07	20-28* Driving Layup by DENNIS, BILL Assist by KROHMAN, JEFF	3-4	75.0% 11-17 64.7%
3-4	75.0%	9-17 52.9%	6 ft Lane Bank by STORY, JEREMY Foul on BREWER, RORY	2 3:20	*22-28		
2		4		2 2:52			
			Sub In: MORTON, KEITH Out: BREWER, RORY	2 2:52	Sub In: KRAEMER, JASON Out: BROSKY, NICK		
				2 2:52			
				2 2:52	22-31* 3 pt 22 ft Left Side Jump shot by KROHMAN, JEFF Assist by CLARK, STEVE	3-4	75.0% 12-18 66.6%
7-9	77.7%	10-18 55.5%	6 ft Lane Turnaround by LANGHI, DAN Assist by MORTON, KEITH	2 2:24	*24-31	1	9
1		5	Foul on MORTON, KEITH	2 2:13			
1		5		2 2:13	24-32* KROHMAN, JEFF, 2 Free Throws made 1st missed 2nd	3-4	75.0% 5-6 83.3%
8-10	80.0%	11-20 55.0%	3 pt 22 ft Right Side Jump shot by LANGHI, DAN Assist by STORY, JEREMY	2 1:44	*27-32		
4		6		2 0:00	Steal by MCKINLEY, JEFF	1	2
1		6	Bad Pass by STORY, JEREMY	2 0:00			

OFFICIAL NFSHSA BASKETBALL BOX SCORE: * OFFICIAL FIRST HALF *
 Date: 03-15-95 Site:BOY'S SWEET 16, LEXINGTON

VISITORS (Last Name, First)

NO.	NAME	Tot FG		3-POINT		FT	FTA	Rebounds			PF	TP	A	TO	BLK	S	TIME				
		FG	FGA	FG	FGA			OFF	DEF	TOT											
24	SIMON KENTON	3	4	0	0	0	0	2	1	3	1	6	1	0	0	0	13:42				
25	DENNIS, BILL	1	5	0	2	0	0	0	3	3	1	2	4	1	0	1	16:00				
33	MCKINLEY, JEFF	1	2	0	0	0	0	0	1	1	2	2	0	0	0	0	6:25				
15	MEYER, SCOTT	3	5	2	3	3	4	0	1	1	1	11	1	2	0	0	16:00				
21	KROHMAN, JEFF	4	4	1	1	2	2	1	0	1	1	11	0	0	0	1	11:35				
30	BROSKY, NICK	0	0	0	0	0	0	0	0	0	1	0	2	1	0	0	4:02				
10	ARROWOOD, CHRIS	0	1	0	1	0	0	0	0	0	0	0	0	1	0	0	6:43				
44	KRAEMER, JASON	0	0	0	0	0	0	0	2	2	0	0	1	0	0	0	5:33				
	CLARK, STEVE	0	0	0	0	0	0	0	0	0	0	0	0	0	0	0					
TEAM REBOUNDS (INCLUDED IN TOTALS)																					
TOTALS		12	21	3	7	5	6	4	8	12	7	32	9	5	0	2	80				
Percentages:		HALF		FG		12/21		57.1%		3-PT.		37/77		42.9%		FT		5/6		83.3%	
		Period 1				6/9		66.7%				2/4		50.0%				4/4		100.0%	
		Period 2				6/12		50.0%				1/3		33.3%				1/2		50.0%	

HOME (Last Name, First)

NO.	NAME	Tot FG		3-POINT		FT	FTA	Rebounds			PF	TP	A	TO	BLK	S	TIME				
		FG	FGA	FG	FGA			OFF	DEF	TOT											
42	MARSHALL COUNTY	8	10	1	1	2	2	3	2	5	0	19	0	3	0	0	16:00				
44	LANGHI, DAN	0	2	0	0	0	0	0	3	3	1	0	0	1	1	1	16:00				
00	CLEVIDENCE, TODD	0	1	0	0	1	2	0	0	0	1	1	0	0	0	0	16:00				
12	SANDERS, ROBERT	0	2	0	2	0	0	0	0	0	2	0	1	1	0	0	13:08				
33	BREWER, RORY	3	5	1	2	0	1	0	0	0	0	7	4	1	0	0	16:00				
35	STORY, JEREMY	0	0	0	0	0	0	0	0	0	1	0	1	0	0	0	2:52				
MORTON, KEITH																					
TEAM REBOUNDS (INCLUDED IN TOTALS)																					
TOTALS		11	20	2	5	3	5	3	6	9	5	27	6	6	1	1	80				
Percentages:		HALF		FG		11/20		55.0%		3-PT.		2/5		40.0%		FT		3/5		60.0%	
		Period 1				5/11		45.5%				1/2		50.0%				2/3		66.7%	
		Period 2				6/9		66.7%				1/3		33.3%				1/2		50.0%	

OFFICIALS: Sarge Donahue, Rick Chasteen, Glenn Brown-Alt
 Technicals: None

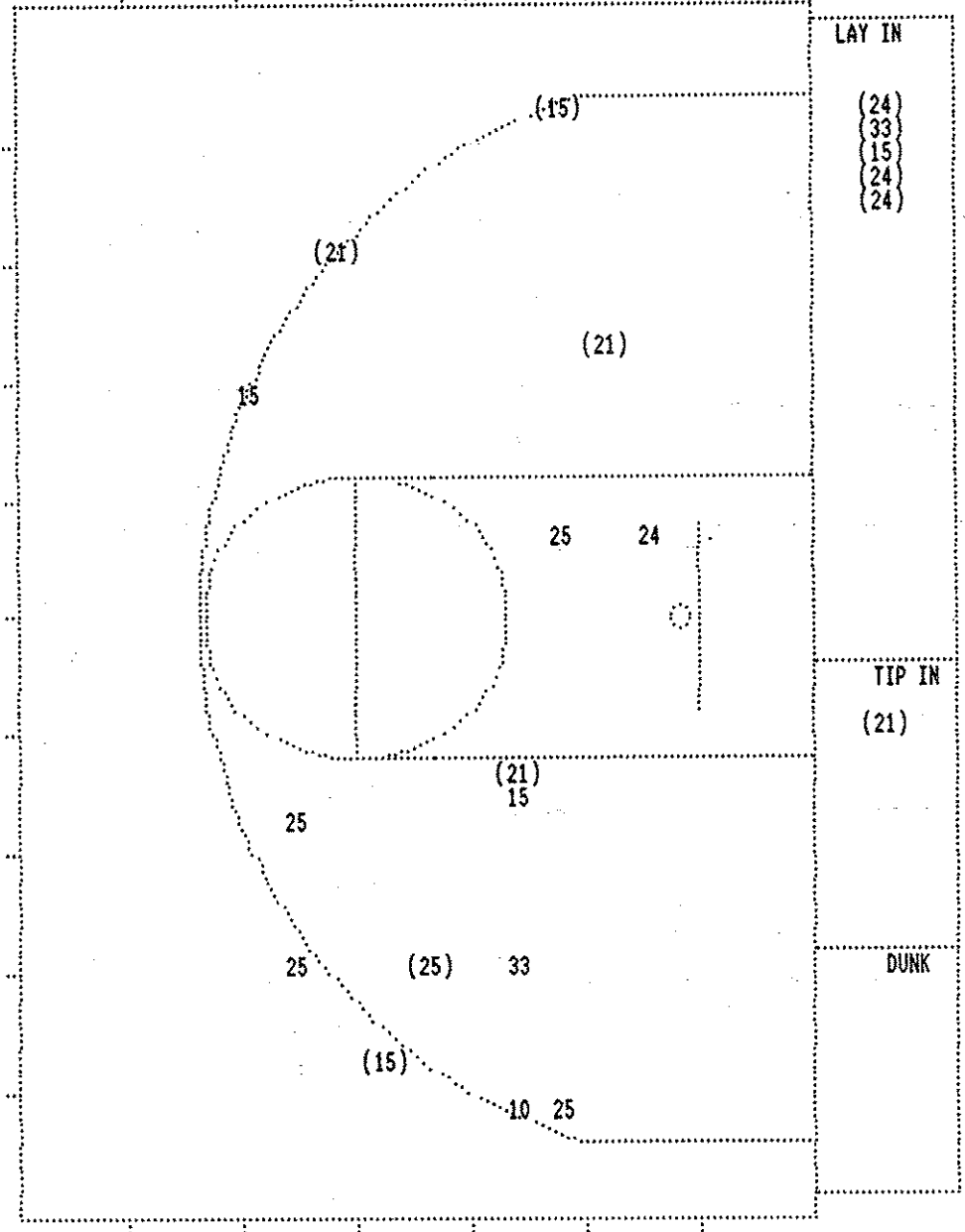
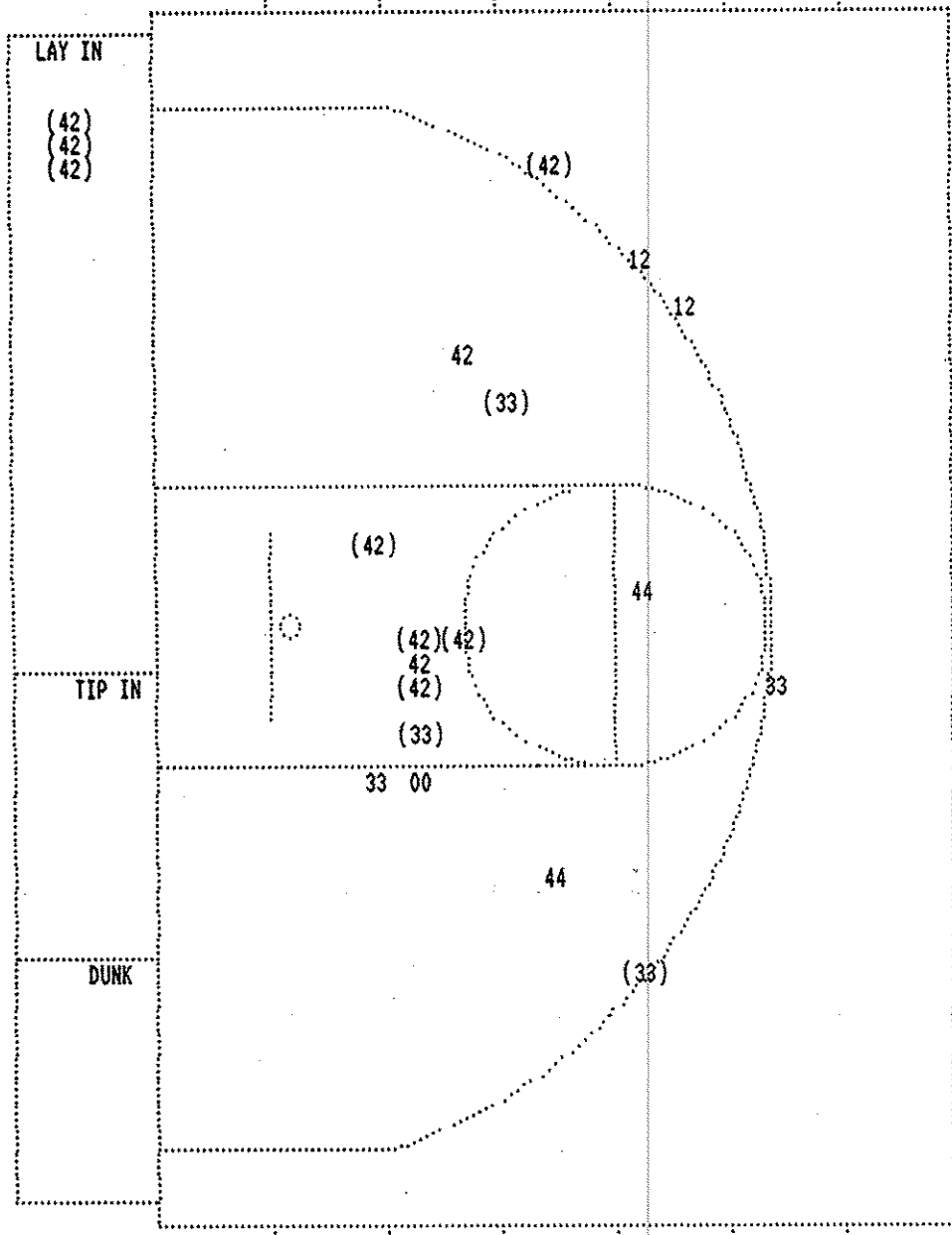
SCORE BY PERIODS

SIMON KENTON	18	14	=	32
MARSHALL COUNTY	13	14	=	27

Attendance: 15,175

COMMENTS: POINTS OFF TURNOVERS SECOND CHANCE POINTS

SIMON KENTON	10	MARSHALL COUNTY	5	SIMON KENTON	4	MARSHALL COUNTY	4
--------------	----	-----------------	---	--------------	---	-----------------	---



MARSHALL COUNTY			
Player		Player	
42 - LANGHI, DA	8/10	80.0%	
44 - CLEVIDENCE	0/2	0.0%	
00 - SANDERS, R	0/1	0.0%	
12 - BREWER, RO	0/2	0.0%	
33 - STORY, JER	3/5	60.0%	
Layups	1-9 Ft	10-15 Ft	Over 15 Ft
3 / 3	5 / 8	1 / 4	2 / 5
100.0%	62.5%	25.0%	40.0%
			3 Pointers
			11 / 20
			55.0%

SIMON KENTON			
Player		Player	
24 - DENNIS, BI	3/4	75.0%	
25 - MCKINLEY,	1/5	20.0%	
33 - MEYER, SCO	1/2	50.0%	
15 - KROHMAN, J	3/5	60.0%	
21 - BROSKY, NI	4/4	100.0%	
10 - KRAENER, J	0/1	0.0%	
Layups	1-9 Ft	10-15 Ft	Over 15 Ft
6 / 6	1 / 4	1 / 2	1 / 2
100.0%	25.0%	50.0%	50.0%
			3 Pointers
			3 / 7
			42.9%
			Total
			12 / 21
			57.1%

SIMON KENTON "PIONEERS" vs MARSHALL COUNTY "MARSHALS"
 2nd Half Play by Play

PAGE : 1

Tip off at 9:00 P.M. on 03/15/95 at BOY'S SWEET 16, LEXINGTON
 Produced by the KHSAA SWEET 16 Staff with the FINAL TIP
 Find it is a product of STONE CONSULTING SERVICE (606)273-3941

Player	Team	MARSHALL COUNTY	Time	Score	SIMON KENTON	Player	Team
LANGHI, DAN, CLEVIDENCE, TODD, SANDERS, ROBERT, BREWER, RORY, STORY, JEREMY			DENNIS, BILL, MCKINLEY, JEFF, MEYER, SCOTT, KROHMAN, JEFF, BROSKY, NICK				
1-4	25.0%	12-22 54.5%	3 7:51	*29-32			
Ball to MARSHALS			3 7:45		Foul on MEYER, SCOTT	3	1
1-1	100%	4-6 66.6%	3 7:45	*30-32			
2		1	3 7:07				
BREWER, RORY, 1 Free Throw made			3 7:06				
Foul on SANDERS, ROBERT			3 7:06	30-33*	DENNIS, BILL, 2 Free Throws missed 1st made 2nd	1-2	50.0% 6-8 75.0%
Sub In: FRALEY, CHARLIE Out: CLEVIDENCE, TODD			3 6:46				
1		2	3 6:00				
Sub In: CLEVIDENCE, TODD Out: FRALEY, CHARLIE			3 5:42				
3		3	3 5:37	30-35*	Follow Layup by MEYER, SCOTT	2-3	66.6% 13-26 50.0%
Player Control Foul on LANGHI, DAN			3 5:35				
Foul on SANDERS, ROBERT							
Sub In: FRALEY, CHARLIE Out: SANDERS, ROBERT							
REB: 11 A: 6 BLK: 1 TO: 7 PF: 3			3 5:35		REB: 15 A: 9 BLK: 0 TO: 5 PF: 1		
S: 1		FT: 4-6 66.6% FG: 12-23 52.1%	No. 1 MARSHALL COUNTY TIME - O U T		S: 2 FT: 6-8 75.0% FG: 13-26 50.0%		
1		4	3 4:52				
Foul on FRALEY, CHARLIE			3 4:52				
2		5	3 4:37				
Sub In: SANDERS, ROBERT Out: FRALEY, CHARLIE			3 4:37	30-37*	KROHMAN, JEFF, 2 Free Throws made both	5-6	83.3% 8-10 80.0%
2		6	3 4:19				
Foul on LANGHI, DAN			3 4:16	30-39*	Layup Off Fast Break by DENNIS, BILL	4-7	57.1% 14-29 48.2%
Foul on CLEVIDENCE, TODD					Assist by KROHMAN, JEFF	2	10
1-4	25.0%	13-26 50.0%	3 4:00	*32-39			
5		7					
16 ft Right Side Jump shot by CLEVIDENCE, TODD			3 3:50	32-41*	Driving Layup by MCKINLEY, JEFF	2-8	25.0% 15-30 50.0%
Assist by STORY, JEREMY			3 3:25				
4		7	3 3:25		Sub In: ARROWOOD, CHRIS Out: MEYER, SCOTT		
Foul on SANDERS, ROBERT			3 3:25				
Sub In: FRALEY, CHARLIE Out: SANDERS, ROBERT			3 3:25	32-43*	KROHMAN, JEFF, 1 & Bonus made both	7-8	87.5% 10-12 83.3%
9-11	81.8%	14-28 50.0%	3 3:13	*35-43			
3 pt 23 ft Right Angle Jump shot by LANGHI, DAN			3 3:13		Foul on DENNIS, BILL	2	2
Sub In: MORTON, KEITH Out: FRALEY, CHARLIE			3 3:13				
			3 2:57		Sub In: KRAEMER, JASON Out: BROSKY, NICK		
			3 2:24		Foul on KROHMAN, JEFF	2	3
			3 2:24		Sub In: CLARK, STEVE Out: ARROWOOD, CHRIS		
			3 1:52		Foul on DENNIS, BILL	3	4
			3 1:52		Sub In: BROSKY, NICK Out: DENNIS, BILL		
4-4	100%	6-8 75.0%	3 1:52	*37-43			
2		8	3 1:48				
LANGHI, DAN, 2 Free Throws made both			3 1:48	37-45*	BROSKY, NICK, 2 Free Throws made both	4-4	100% 12-14 85.7%
Foul on MORTON, KEITH			3 0:59		Player Control Foul on KROHMAN, JEFF	3	5
			3 0:42		Foul on MCKINLEY, JEFF	2	6
			3 0:42		Sub In: DENNIS, BILL Out: KROHMAN, JEFF		
1-3	33.3%	7-10 70.0%	3 0:42	*38-45			
10-13	76.9%	15-31 48.3%	3 0:14	*41-45			
6		8					
STORY, JEREMY, 2 Free Throws made 1st missed 2nd			3 0:01				
3		9	3 0:01				
3 pt 22 ft Right Side Jump shot by LANGHI, DAN			3 0:01	41-46*	MCKINLEY, JEFF, 1 & Bonus made 1st missed 2nd	1-2	50.0% 13-16 81.2%
Assist by STORY, JEREMY							
Foul on BREWER, RORY							
Sub In: FRALEY, CHARLIE Out: CLEVIDENCE, TODD							

SIMON KENTON "PIONEERS" vs MARSHALL COUNTY "MARSHALS"
2nd Half Play by Play

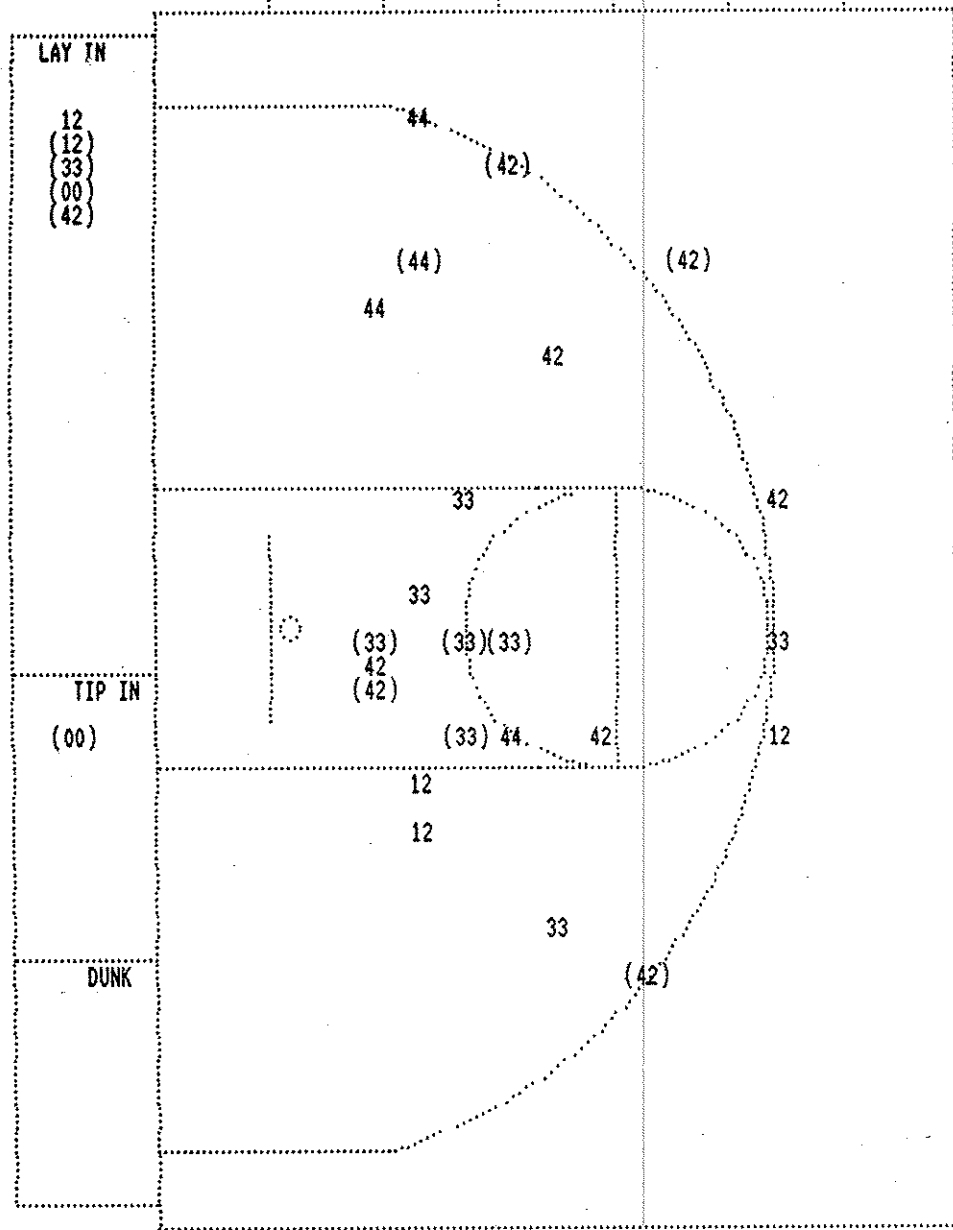
PAGE : 2

Tip off at 9:00 P.M. on 03/15/95 at BOY'S SWEET 16, LEXINGTON
Produced by the KHSAA SWEET 16 Stat Crew with FINAL III
Final III is a product of STONE CONSULTING SERVICE (606)273-3941

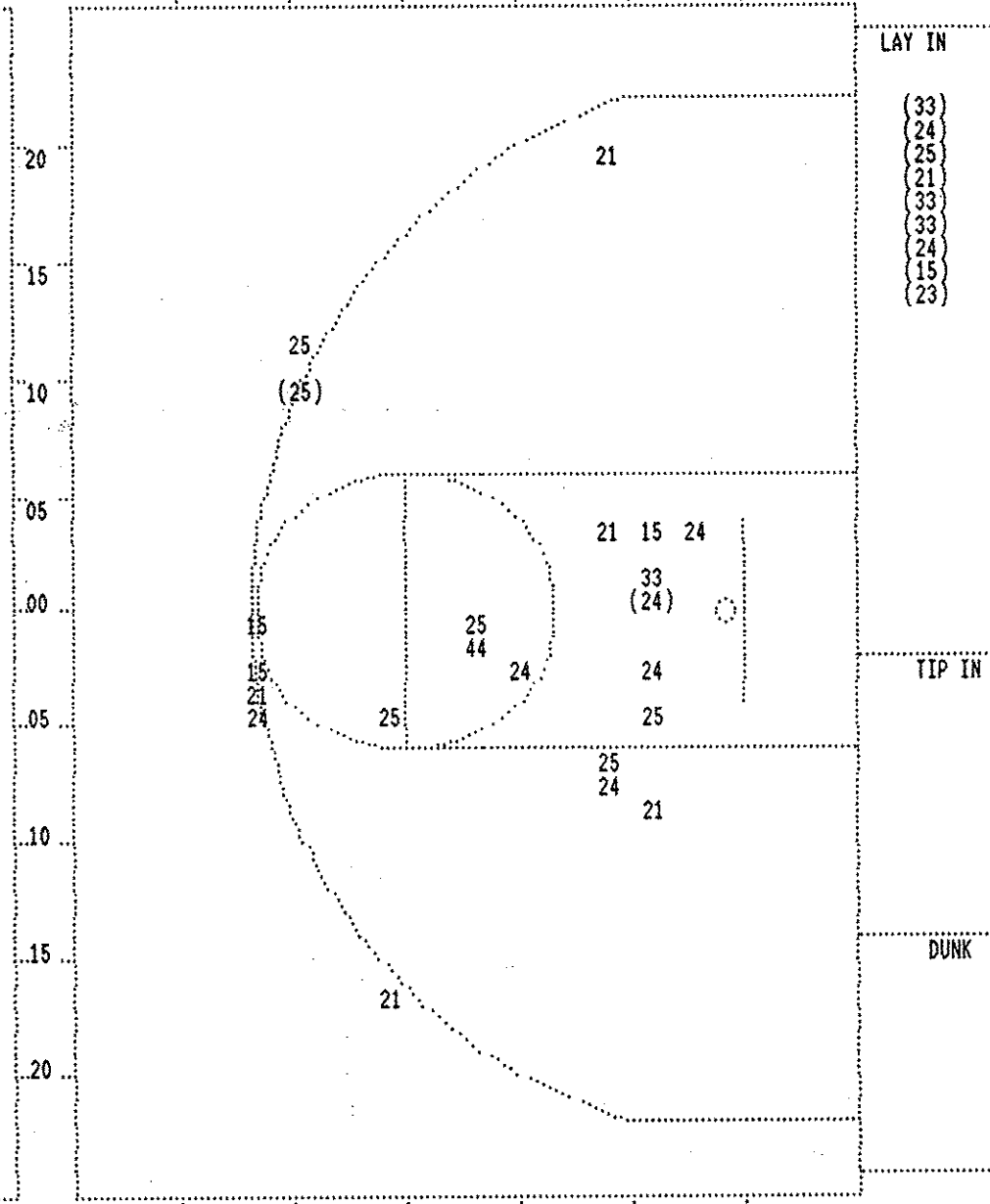
Player	Team	MARSHALL COUNTY
LANGHI, DAN, CLEVIDENCE, TODD, SANDERS, ROBERT, BREWER, RORY, STORY, JEREMY		
4-8	50.0% 16-33 48.4%	8 ft Lane Driving by STORY, JEREMY Foul on LANGHI, DAN
5-9	55.5% 17-34 50.0%	2 ft Lane Driving by STORY, JEREMY
REB: 18 A: 8 BLK: 2 TO: 11 PF: 10 S: 2 FT: 7-10 70.0% FG: 17-34 50.0%		
1-4	25.0% 7-11 63.6%	STORY, JEREMY, 1 & Bonus missed 1st
6-10	60.0% 18-35 51.4%	6 ft Lane Jump shot by STORY, JEREMY
4-5	80.0% 7-12 58.3%	LANGHI, DAN, 1 & Bonus missed 1st
6-7	85.7% 9-14 64.2%	LANGHI, DAN, 1 & Bonus made both
REB: 20 A: 8 BLK: 2 TO: 12 PF: 10 S: 2 FT: 9-14 64.2% FG: 18-35 51.4%		
7-11	63.6% 19-36 52.7%	Driving Layup by STORY, JEREMY
2-5	40.0% 10-15 66.6%	STORY, JEREMY, 1 Free Throw made
1	11	Foul on STORY, JEREMY
11-16	68.7% 20-40 50.0%	3 ft Lane Follow by LANGHI, DAN
7-8	87.5% 11-16 68.7%	LANGHI, DAN, 1 Free Throw made Foul on BREWER, RORY
REB: 24 A: 8 BLK: 2 TO: 12 PF: 12 S: 2 FT: 11-16 68.7% FG: 20-40 50.0%		
9-10	90.0% 13-18 72.2%	LANGHI, DAN, 2 Free Throws made both
2	13	Foul on STORY, JEREMY
1-2	50.0% 21-44 47.7%	Driving Layup by SANDERS, ROBERT Assist by BREWER, RORY
REB: 26 A: 9 BLK: 2 TO: 12 PF: 13 S: 2 FT: 13-18 72.2% FG: 21-44 47.7%		
3	14	Foul on CLEVIDENCE, TODD

Time	Score	SIMON KENTON	Player	Team
4 7:05	41-48*	DENNIS, BILL, McKINLEY, JEFF, MEYER, SCOTT, KROHMAN, JEFF, BROSKY, NICK Ball to PIONEERS Layup Off Fast Break by BROSKY, NICK Assist by KROHMAN, JEFF	5-9	55.5% 16-35 45.7% 3 11
4 6:52	*43-48			
4 6:45				
4 6:45	43-50*	DENNIS, BILL, 2 Free Throws made both	3-4	75.0% 15-18 83.3%
4 6:32	*45-50			
4 6:12		Foul on BROSKY, NICK	2	7
REB: 21 A: 11 BLK: 1 TO: 9 PF: 7 S: 3 FT: 15-18 83.3% FG: 16-35 45.7%				
T I M E - O U T SIMON KENTON No. 1				
4 6:12				
4 6:06	*47-50			
4 4:49	47-52*	Follow Layup by MEYER, SCOTT	3-5	60.0% 17-39 43.5% 3 8
4 4:43		Foul on McKINLEY, JEFF		
4 4:43		Sub In: KRAEMER, JASON Out: BROSKY, NICK		
4 4:43				
4 4:02	47-54*	3 ft Lane Bank by DENNIS, BILL	5-8	62.5% 18-40 45.0% 4 9
4 3:40		Foul on DENNIS, BILL		
4 3:40	*49-54			
REB: 24 A: 11 BLK: 1 TO: 10 PF: 9 S: 3 FT: 15-18 83.3% FG: 18-40 45.0%				
No. 2 MARSHALL COUNTY T I M E - O U T				
4 2:59		Sub In: BROSKY, NICK Out: KRAEMER, JASON		
4 2:56	*51-54			
4 2:56		Foul on McKINLEY, JEFF	4	10
4 2:56	*52-54			
4 2:45	52-56*	Driving Layup by MEYER, SCOTT Assist by BROSKY, NICK	4-6	66.6% 19-41 46.3% 1 12
4 2:44				
4 2:44		MEYER, SCOTT, 1 & Bonus missed 1st	0-1	00.0% 15-19 78.9%
4 2:13	*54-56			
4 2:13		Foul on BROSKY, NICK	3	11
4 2:13	*55-56			
4 2:06				
4 2:06	55-58*	KROHMAN, JEFF, 1 & Bonus made both	9-10	90.0% 17-21 80.9%
REB: 25 A: 12 BLK: 2 TO: 10 PF: 11 S: 3 FT: 17-21 80.9% FG: 19-42 45.2%				
T I M E - O U T SIMON KENTON No. 2				
4 1:20		Foul on MEYER, SCOTT	4	12
4 1:20	*57-58			
4 1:00	57-60*	Driving Layup by DENNIS, BILL Assist by McKINLEY, JEFF	6-10	60.0% 20-44 45.4% 5 13
4 0:48				
4 0:48	57-62*	KROHMAN, JEFF, 1 & Bonus made both	11-12	91.6% 19-23 82.6%
4 0:40	*59-62			
REB: 27 A: 13 BLK: 2 TO: 10 PF: 12 S: 3 FT: 19-23 82.6% FG: 20-44 45.4%				
No. 3 MARSHALL COUNTY T I M E - O U T				
4 0:39				
4 0:38		MEYER, SCOTT, 1 & Bonus missed 1st	0-2	00.0% 19-24 79.1%
4 0:38				

Player	Team	MARSHALL COUNTY	Time	Score	SIMON KENTON	Player	Team
12-18	66.6%	22-45 48.8%	3 pt 20 ft Left Angle Jump shot by LANGHI, DAN	4 0:27	59-64*	Layup Off Fast Break by KROHMAN, JEFF	4-8 50.0% 21-45 46.6%
7		10	Assist by STORY, JEREMY	4 0:18	*62-64		
			REB: 27 A: 10 BLK: 2 TO: 13 PF: 14	4 0:14		REB: 27 A: 13 BLK: 2 TO: 10 PF: 12	
			S: 2 FT: 13-18 72.2% FG: 22-45 48.8%	T I M E - O U T SIMON KENTON No. 3		S: 4 FT: 19-24 79.1% FG: 21-45 46.6%	
5		15	Foul on BREWER, RORY	4 0:12			
			Sub In: MORTON, KEITH Out: BREWER, RORY	4 0:12			
0-1		0-1	Rebound by SANDERS, ROBERT	4 0:12		KROHMAN, JEFF, 1 & Bonus missed 1st	11-13 84.6% 19-25 76.0%
2-3	66.6%	23-47 48.9%	Follow Tip by SANDERS, ROBERT, made	4 0:00			
				4 0:00	*64-64		



MARSHALL COUNTY					
Player			Player		
42 - LANGHI, DA	5 / 9	55.5%			
44 - CLEVIDENCE	1 / 4	25.0%			
00 - SANDERS, R	2 / 2	100.0%			
12 - BREWER, RO	1 / 5	20.0%			
33 - STORY, JER	5 / 9	55.5%			
Layups	1-9 Ft	10-15 Ft	Over 15 Ft	3 Pointers	Total
5 / 6	5 / 11	0 / 2	1 / 3	3 / 7	14 / 29
83.3%	45.5%	0.0%	33.3%	42.9%	48.3%



SIMON KENTON					
Player			Player		
24 - DENNIS, BI	3 / 8	37.5%	23 - HAYWOOD, M	1 / 1	100.0%
25 - MCKINLEY,	2 / 7	28.5%	44 - CLARK, STE	0 / 1	0.0%
33 - MEYER, SCO	3 / 4	75.0%			
15 - KROHMAN, J	1 / 4	25.0%			
21 - BROSKY, NI	1 / 6	16.6%			
Layups	1-9 Ft	10-15 Ft	Over 15 Ft	3 Pointers	Total
9 / 9	1 / 11	0 / 3	1 / 8	11 / 31	
100.0%	9.1%	0.0%	12.5%	35.5%	